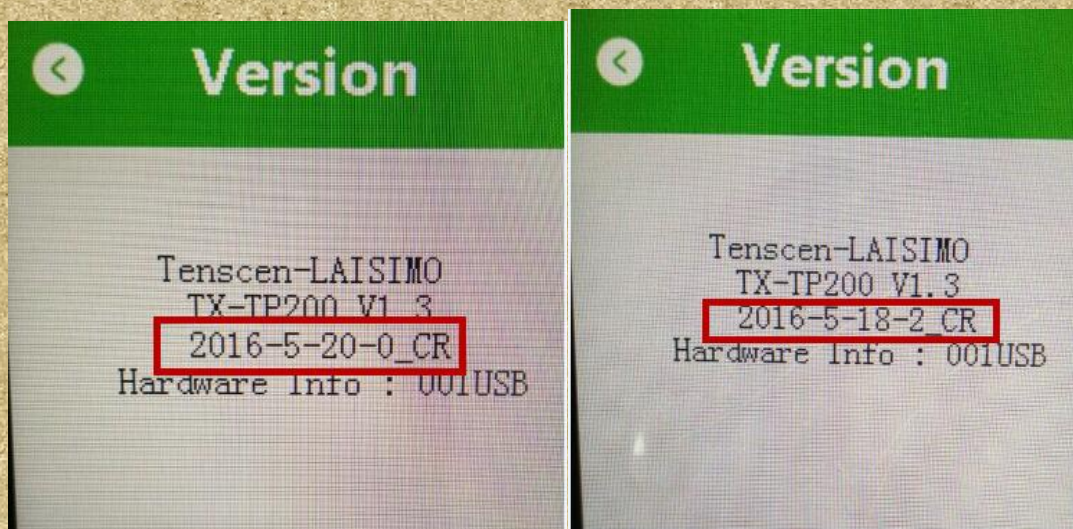


LAISIMO L3 200W UPGRADING INSTRUCTION

NOTE: this software is used to upgrade to make your device able to change your wallpaper by bluetooth.

Pls kindly note only these two versions (2016-5-20-0_CR&2016-5-18-2_CR) need to be upgraded.



So pls check version in your device before upgrading: Slide up  on the bottom of the screen → Select settings → Select version

1.Driver Installation Steps:

System Requirement: windows 7/windows 8/windows 10
(Bit: 32bit or 64bit)

To our valued customers:

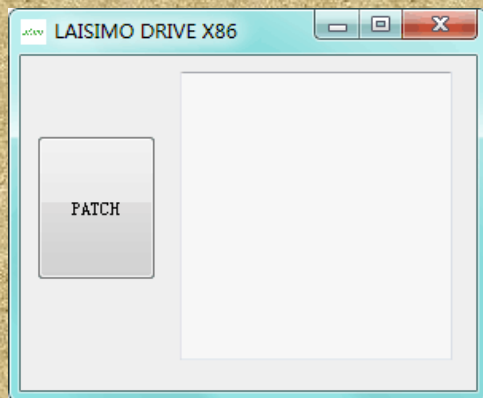
If your Security Software in your computer auto detected the software downloaded from our website as virus or Trojan horses, please add it to trusted software to avoid being deleted or isolated by your Security Software.

Please rest assured that our software is 100% safe and will not cause any threat to your computer or violate your privacy.

For 32bit:

Window7 click twice **Win7 32bit**  to install driver.

Window8/10 click twice **Win8 OR Win10 32bit** 

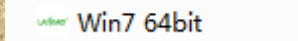


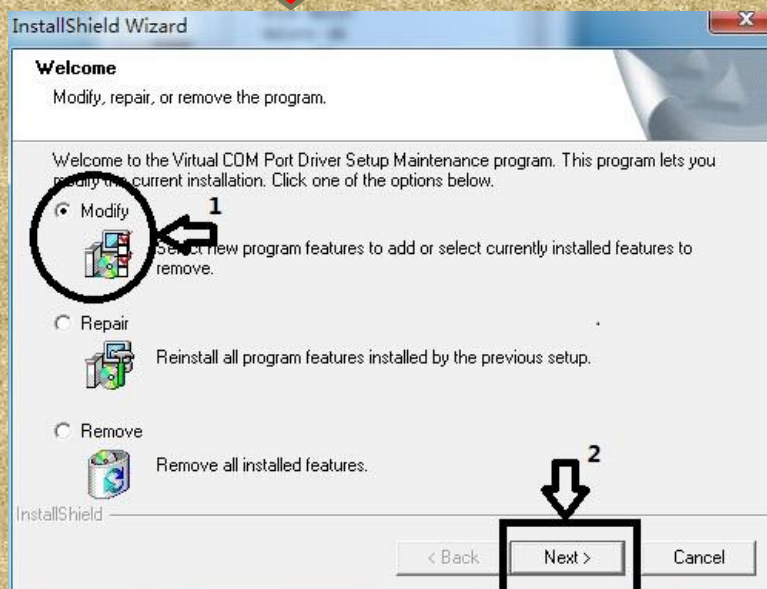
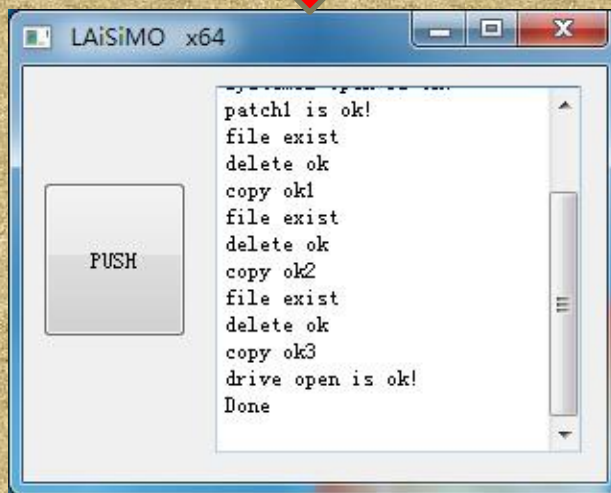
For 64bit:

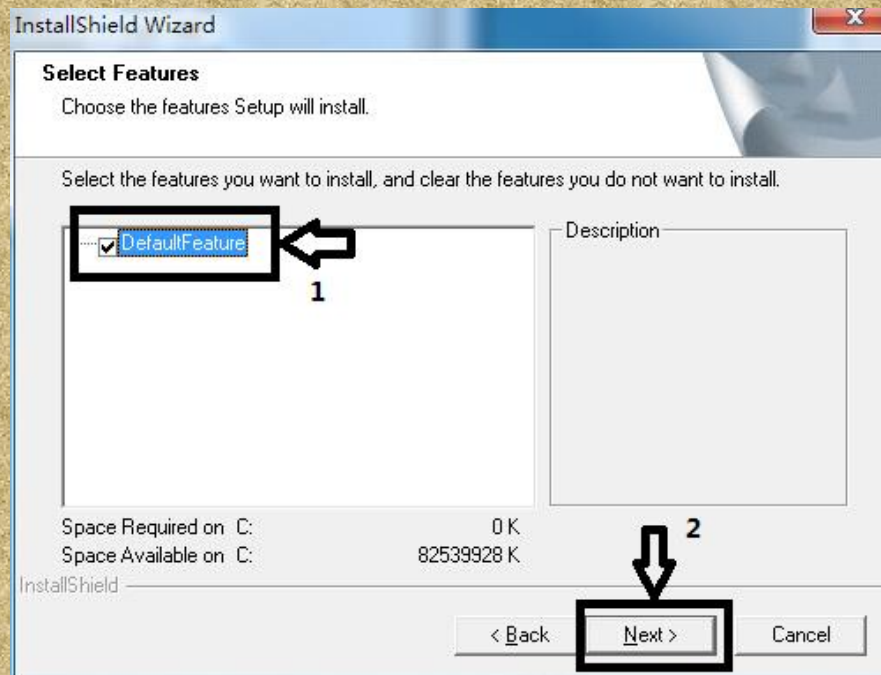
Window7 click twice **Win7 64bit**  to install driver.

Window8/10 click twice **Win8 OR Win10 64bit** 

Take Win7 64bit system as an example:

1. click twice Win7 64bit , then you will see the following pop-up window, click **PUSH** to do the following procedure.





When driver is installed, it is time to upgrade

Upgrading Instruction:

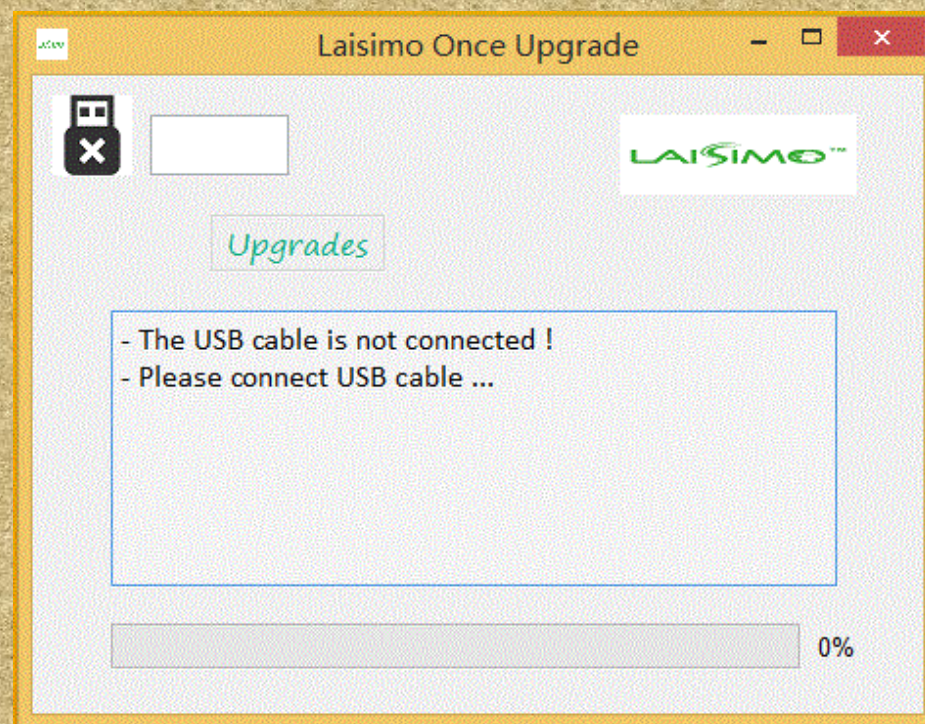
1. Steps for Upgrading:

Step 1: Press and keep holding on **fire button** when installing batteries.

Step 2 : 3 to 4 seconds after finishing installing batteries, release the fire button. Now the device is under IAP mode.

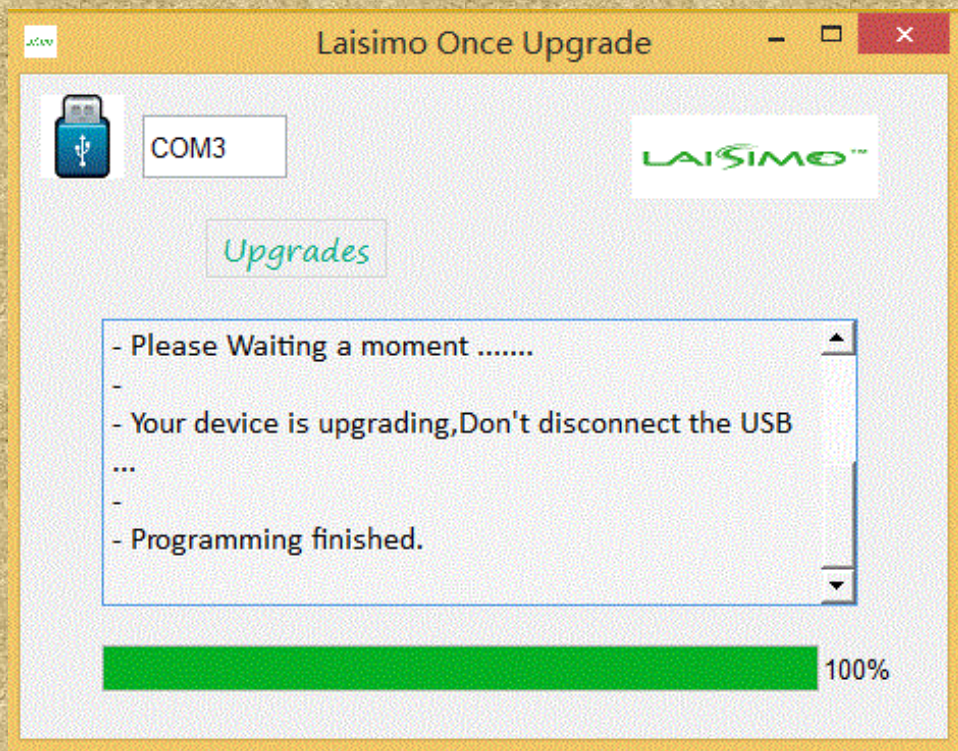
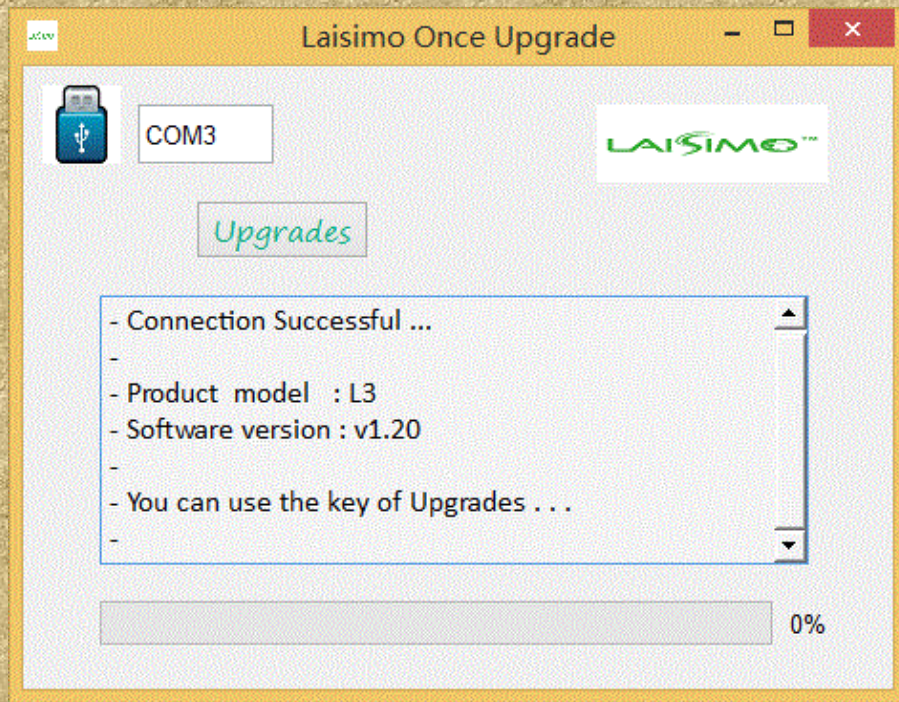
Step 3: connect the device with computer via USB cable

You can open the program “UPGRADE” to check whether the device connects with your computer successfully.

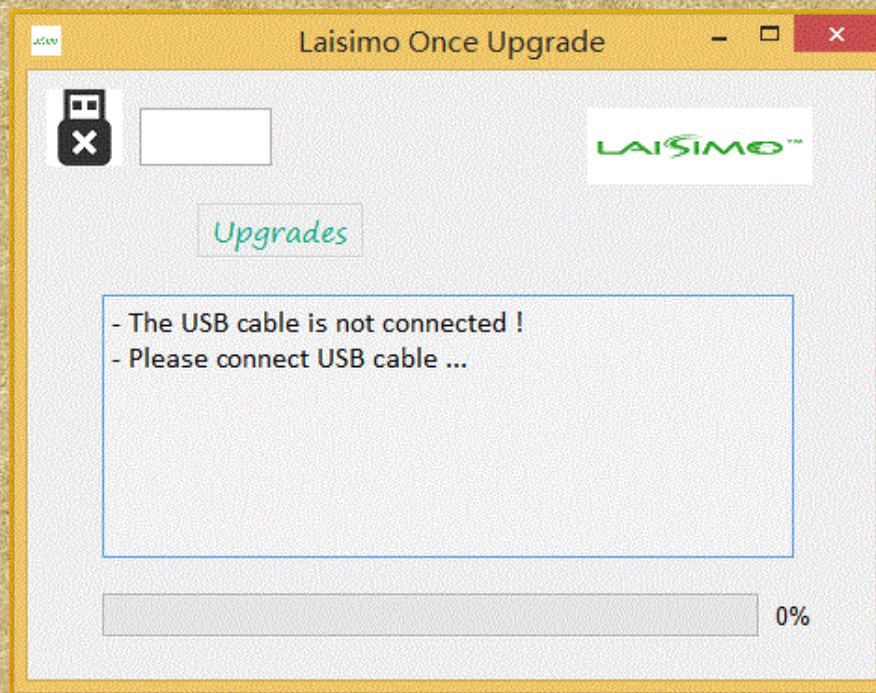


4 : If connect successfully, it shows as the below picture after you open the program. Then you just need to click **Upgrades** to do the upgrade. When it shows 100%, the upgrade is finished.

NOTE: when it shows programming is finished, please take out the battery and insert battery again to **RESTART** your L3 to make upgrade completely successful.



6. If not connect successfully, you need to connect the USB again. And you will see the following reminder.



Note: If it shows **!Serial open error.Please connect the USB again** as Below.
Please restart your device and do the same operation again to connect the device.

